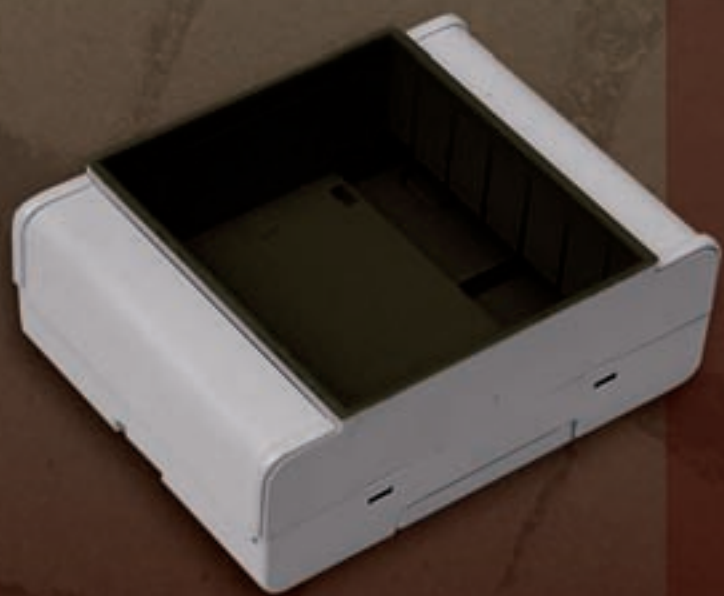


SIMP
EL BAG

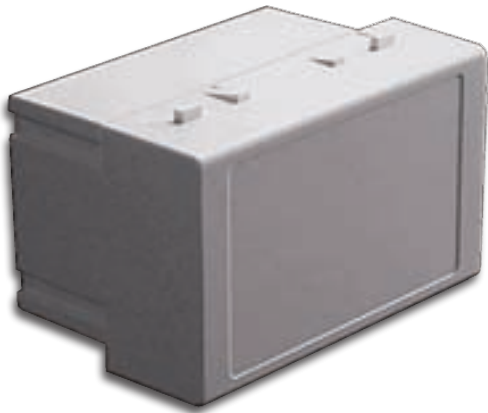


DOMOTICS - DOMOTICA

Domotics 500 Series



503B



DOMOTICS 503B SERIES

The housing 503B is suitable for Domotics and similar applications, where local terminals are installed in the wall like an usual wall-mounted socket or switch. This Series consists of a bottom and a front panel, to be mounted in any compatible wall plate of BTICINO and other Manufacturers. The Series 503 is also useful for light dimmers, ventilation and clima units, ambient heating controls, 24 hour timers, and small electronic units for display and control. This Series is particularly suited for application in CIVIL, MARINE and HOTELS environments. Custom drilling on any side. Made of Blend PC/ABS class V2 (on request class V0), in white, grey (RAL7035) or black (RAL7021).

TECHNICAL DRAWINGS ON: www.elbag.net

Dimensions

503/B

