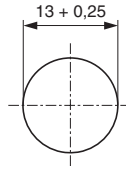




■ **CYLINDRICAL LIGHT INDICATORS**

COMPOSED OF A BASIC UNIT AND LENS REMOVABLE OR FIXED



Hole

Ø 13 mm + 0,25/-0

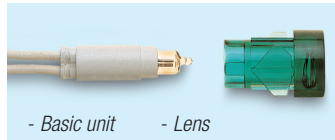
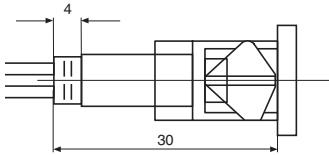
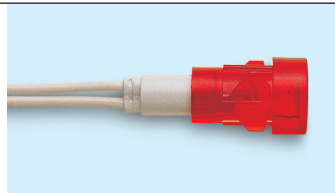
Panel thickness

0,5/2,5 mm

■ SELF-LOCKING UNITS

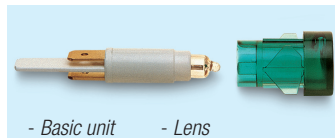
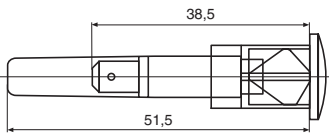
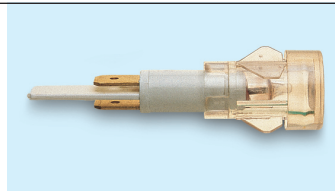
TB/013/SF

NI13RLXXXX



TBF/013/SF

NI13RTXXXX



Working voltage - VAC	⊕ Incandescence: 6/12/24 V	⊕ Neon and fluorescence: 110/250/400 V
Body and lens	Polycarbonate	
Wire ends	TB/013/SF NI13RLXXXX	PVC sheath wire cross, section 0,50 mm ² , wires lenght 220 mm, lenght of stripped wires end 6 mm
	TBF/013/SF NI13RTXXXX	Male faston 6,3x0,8 mm and 4,8x0,8 mm
Lens colour	Neon: red, orange, transparent, yellow-green (light green) Fluorescent: green	Incandescence: red, orange, transparent, yellow-green (light green), green, blue
Variants	Cables: lenght to customer's requirements - with clamped connectors - silicone insulated - tinned ends Removable lens Anti-luminescence resistor	

■ PANEL HOLE 13 MM DIA. - SELF-LOCKING UNITS

<p>SF 1 = STANDARD</p>	<p>SF 2</p>	<p>SF 3</p>
<p>SF 4</p>	<p>SF 5</p>	<p>SF 6</p>