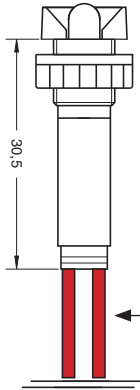




LD/010/xx

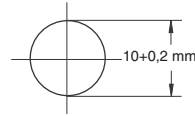


Black or chromium plated lens

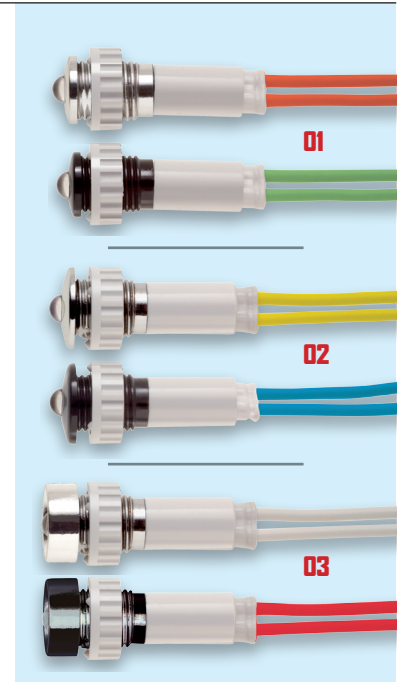
Wires the same colour as the emitted light

HOLE

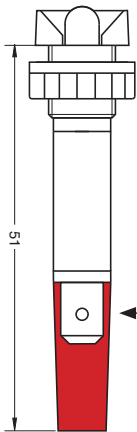
DIAMETER **10**



VOLTAGE		CONSUMPTION
12	VAC-DC	20 mA Max
24/28	VAC-DC	
48	VAC-DC	
110-130	VAC-DC	5 mA Max
230	VAC-DC	3 mA Max
100.000 h		
Life hours		
50 pcs/unit		
Package		



LDF/010/xx

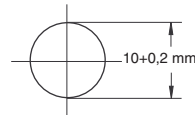


Black or chromium plated lens

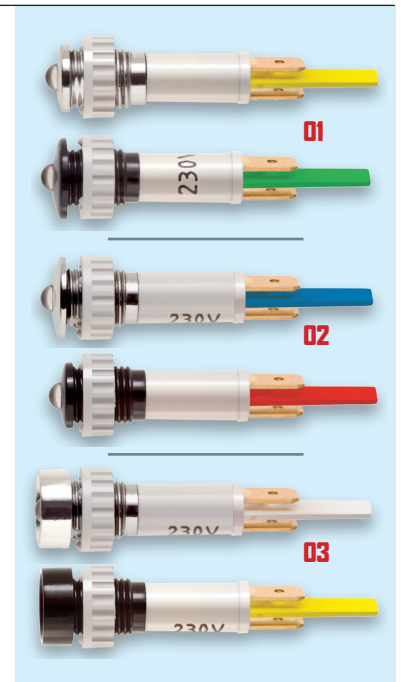
Faston support the same colour of the emitted light

HOLE

DIAMETER **10**

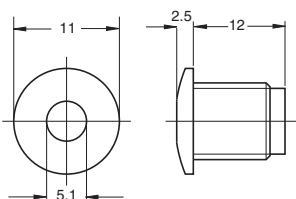


VOLTAGE		CONSUMPTION
12	VAC-DC	20 mA Max
24/28	VAC-DC	
48	VAC-DC	
110-130	VAC-DC	5 mA Max
230	VAC-DC	3 mA Max
100.000 h		
Life hours		
50 pcs/unit		
Package		

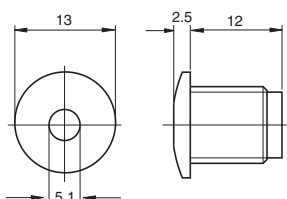


• LENSES

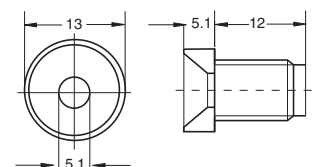
LD/010/01 ■ LDF/010/01



LD/010/02 ■ LDF/010/02



LD/010/03 ■ LDF/010/03



The light indicator can be used with AC and DC; with direct current polarization of the light indicator is not necessary

LIGHT EMITTED COLOUR



Red



Green



Yellow



Blue



White